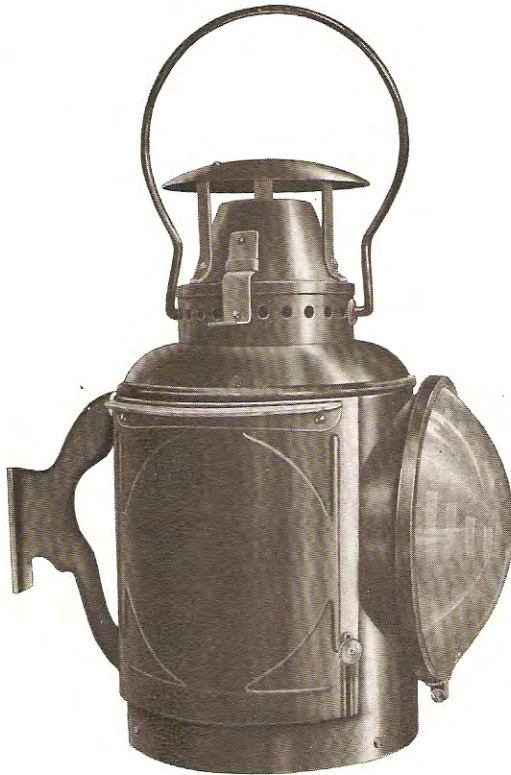


# The Adams & Westlake Company

New York

CHICAGO

Philadelphia



## No. 219 Round Body, Steel Tail Lamp

Adlake Non-Sweating Balanced Draught Ventilation

## **No. 219**

# **Round Body Steel Tail Lamp**

Our No. 219 Round Body Steel Tail Lamp is a special lamp made of heavy steel throughout, with one  $6\frac{3}{8}$  in. ruby lens and a sliding door.

This lamp is fitted with our Adlake Non-Sweating Balanced Draught Ventilation, which insures unfogged lenses and maximum signalling efficiency. By eliminating sweating of the lamp, rusting is minimized and the lamp has a very long life. The wind proof door and the design of the lamp enable it to stay lighted under trying weather conditions, and to withstand the high wind pressures to which it is subjected.

We use in this lamp our No. 17 oil fount, and a No. 1 signal burner with a  $4\frac{1}{2}$  in. shaft.

As shown on page one, this lamp is equipped with a Style "F" bracket, but other types can be applied if desired.