

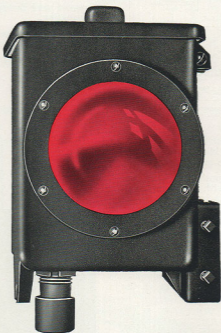
The Adams & Westlake Company

CHICAGO

General Office and Works
ELKHART, INDIANA

NEW YORK

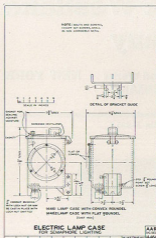
(Supersedes Bulletin B-29)



Adlake No. 1375

AAR Semaphore Lamp

Adlake No. 1375 AAR Semaphore Lamp



Reproduced by courtesy and permission of the Signal Section, Association of American Railroads.

Terminal block located at top of lamp case to facilitate wiring.

Binding posts to AAR specifications with moisture resistant porcelain base.

Bakelite mounting for socket holder.

Focus is fixed at factory for accurately based lamps.

Detachable sighting device can be purchased to simplify checking the alignment of the signal beam.

ADVISE VOLTAGE, WATTAGE OR AMPERAGE, AND TYPE OF FILAMENT AND LAMP BULB TO BE USED, SO THAT WE CAN ACCURATELY FOCUS LAMPS BEFORE SHIPMENT.

AAR Sig. Sec.
Plan 1446-A
Spec. 174-38

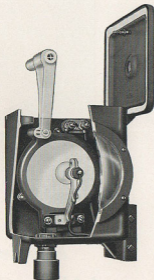
5" Mangin Mirror sealed in a brass housing to protect the silvered reflecting surface.

5 $\frac{3}{8}$ " Roundel. Specify whether flat or convex and if colored.

Screened vent in top to minimize sweating.

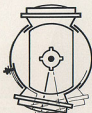
Screws of non-corrosive metal, except in mounting socket.

Lamp case made of gray iron castings.



Adlake Station Train Order or Semaphore Lamps with Adjustable Lens

Adlake Station Train Order or Semaphore Lamps with Adjustable Lens have one lens so mounted that it can be easily and accurately adjusted through an angle of 20 degrees to make its signal effective on curves.



Adjustment through 20 degrees means that 100 feet from the semaphore the direction of signal can be turned through 35 feet. This is sufficient to compensate for the change of direction on sharp curves.

No. 1263
for
Electricity

No. 282
Oil
Burning

