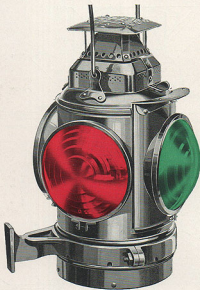


# The Adams & Westlake Company

CHICAGO

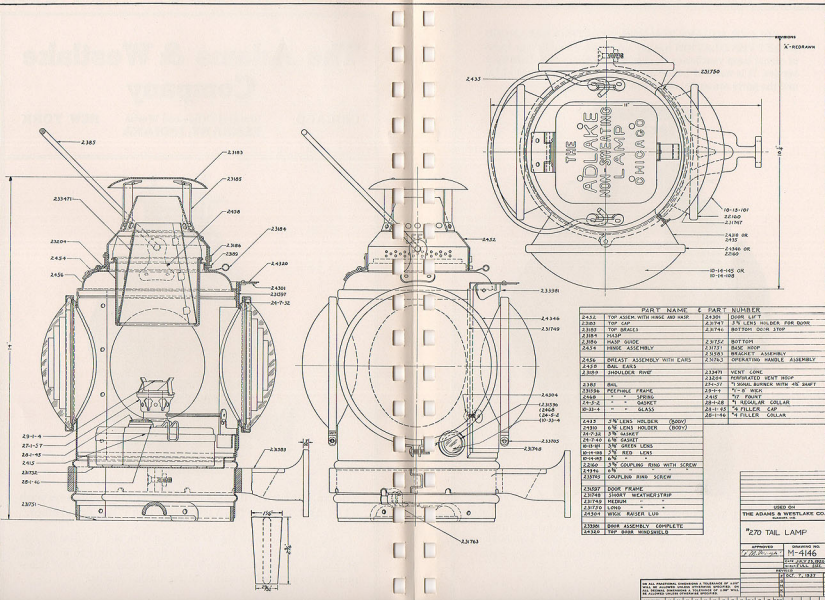
General Office and Works  
ELKHART, INDIANA

NEW YORK



**The No. 270 Straight Body Steel Marker or Tail Lamp with  
ADLAKE Square-Top Ventilation and Wind-Proof Door.**

ADLAKE No. 270 Lamp is equipped with No. 1 Signal Burner and 14 ounce oil fount. It can be furnished with either three or four  $5\frac{3}{8}$ " lenses, color as specified. The red lens only can be  $6\frac{3}{8}$ " diameter. See page 4 and Bulletin B-31 for further details.



PART NAME	PART NUMBER	PART NUMBER	PART NUMBER
2432 TOP ASM WITH HUBB AND WAF	2430	COVER W/IT	2430
2433 TOP CAP	2434	3/8" LENS HOLDER FOR SHOE	2434
2434 TOP BRACE	2434	BOTTOM DOOR STOP	2434
2434 WAF	2434	2434	2434
2434 HUBB GUIDE	2434	BOTTOM	2434
2434 HUBB ASSEMBLY	2434	BACK WAF	2434
2434 WAF ASSEMBLY WITH EARS	2434	BRACKET ASSEMBLY	2434
2435 BRASS EARS	2435	OPERATING HANDLE ASSEMBLY	2435
2435 BRASS RIBBON	2435	VENTY LAMP	2435
2435 BRASS RIBBON	2435	FORGATED TEST WAF	2435
2436 BALL	2436	1" SMALL BRONZE W/TH 4" SHAF	2436
2436 RECEPTACLE FRAME	2436	1/2" W/TH	2436
2436 " = VENTY	2436	1/2" PAINT	2436
2436 " = CASSET	2436	1/2" REGULAR COLLAR	2436
2436 " = GLASS	2436	1/2" FILLER CAP	2436
2437 3/8" LENS HOLDER (BODY)	2437	1/2" COLLAR	2437
2437 1/2" LENS HOLDER (BODY)	2437		
2438 3/8" WAF	2438		
2438 1/2" WAF	2438		
2439 1/2" WAF	2439		
2440 1/2" WAF	2440		
2441 1/2" WAF	2441		
2442 1/2" WAF	2442		
2443 1/2" WAF	2443		
2444 1/2" WAF	2444		
2445 1/2" WAF	2445		
2446 1/2" WAF	2446		
2447 1/2" WAF	2447		
2448 1/2" WAF	2448		
2449 1/2" WAF	2449		
2450 1/2" WAF	2450		
2451 1/2" WAF	2451		
2452 1/2" WAF	2452		
2453 1/2" WAF	2453		
2454 1/2" WAF	2454		
2455 1/2" WAF	2455		
2456 1/2" WAF	2456		
2457 1/2" WAF	2457		
2458 1/2" WAF	2458		
2459 1/2" WAF	2459		
2460 1/2" WAF	2460		
2461 1/2" WAF	2461		
2462 1/2" WAF	2462		
2463 1/2" WAF	2463		
2464 1/2" WAF	2464		
2465 1/2" WAF	2465		
2466 1/2" WAF	2466		
2467 1/2" WAF	2467		
2468 1/2" WAF	2468		
2469 1/2" WAF	2469		
2470 1/2" WAF	2470		
2471 1/2" WAF	2471		
2472 1/2" WAF	2472		
2473 1/2" WAF	2473		
2474 1/2" WAF	2474		
2475 1/2" WAF	2475		
2476 1/2" WAF	2476		
2477 1/2" WAF	2477		
2478 1/2" WAF	2478		
2479 1/2" WAF	2479		
2480 1/2" WAF	2480		
2481 1/2" WAF	2481		
2482 1/2" WAF	2482		
2483 1/2" WAF	2483		
2484 1/2" WAF	2484		
2485 1/2" WAF	2485		
2486 1/2" WAF	2486		
2487 1/2" WAF	2487		
2488 1/2" WAF	2488		
2489 1/2" WAF	2489		
2490 1/2" WAF	2490		
2491 1/2" WAF	2491		
2492 1/2" WAF	2492		
2493 1/2" WAF	2493		
2494 1/2" WAF	2494		
2495 1/2" WAF	2495		
2496 1/2" WAF	2496		
2497 1/2" WAF	2497		
2498 1/2" WAF	2498		
2499 1/2" WAF	2499		
2500 1/2" WAF	2500		

2430 1/2" WAF

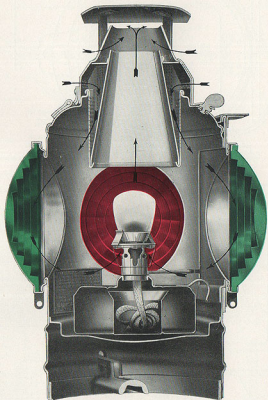
2430 1/2" WAF

2430 1/2" WAF

2430 1/2" WAF

2430 1/2" WAF

**ADLAKE SQUARE TOP NON-SWEATING BALANCED DRAFT VENTILATION** has proved superior to all other types of signal lamp ventilation in over twenty years of satisfactory service. It is made of heavy drawn steel, dipped in terne metal and the parts are easily removable for cleaning.



**ADLAKE WIND-PROOF DOOR** increases the efficiency of Adlake Square Top Ventilation. A heavy pressed steel door frame adds strength and rigidity to the door assembly. Weatherstrips are added around the door and wick raiser. See Bulletin B-31 for further details.