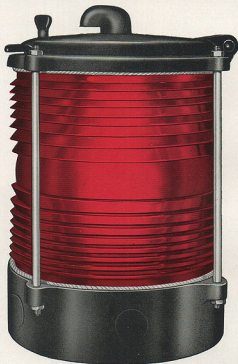


The Adams & Westlake Company

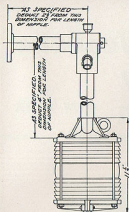
CHICAGO

General Office and Works
ELKHART, INDIANA

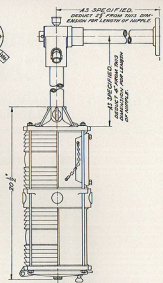
NEW YORK



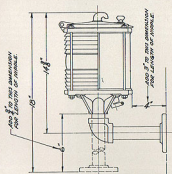
ADLAKE
Cast Bridge Lamps



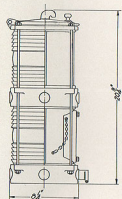
No. 1332



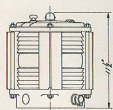
No. 1331



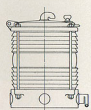
No. 1334



No. 1333



No. 1335



No. 1330

ADLAKE

Electric Bridge Lamps

Aluminum Castings

All Adlake Bridge Lamps are in accordance with U. S. DEPARTMENT OF COMMERCE, LIGHTHOUSE SERVICE, REGULATIONS FOR LIGHTING BRIDGES, 1937, which were later transferred to the U. S. Coast Guard.

Adlake Electric Lamps are made with aluminum castings and are entirely weatherproof. They are ventilated to prevent sweating of the lens which would obscure the signal. These vents are screened to keep bugs and insects from entering the lamp.

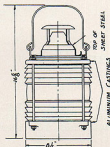
The lamps most commonly used are shown on the opposite page. Since all parts are interchangeable, each lamp can be assembled with 180 or 360 degree 8 inch fresnels. Also, many other assemblies can be made to meet special requirements.

Standard Specifications—Aluminum body castings. Cadmium plated steel assembly bolts and screws. Standard 1¼" iron pipe and pipe fittings. Gray iron pivot casting with bronze pivot pin. All sockets focused for A-21, 50 watt lamps unless otherwise specified.

Alternate and special assemblies—All lamps can have either 180 or 360 degree fresnels, red, green, or clear. Bracket or pedestal base can be furnished with No. 1330, 1333, or 1335 lamps. Brass castings and brass assembly bolts and screws can be furnished. Lamps can also be assembled with 2 inch pipe and pipe fittings of iron, brass or aluminum. A pivot with locking arrangement to hold lamp stationary and to prevent tampering with the lamp by unauthorized persons is available. Electric sockets can be arranged for almost any size of lamp bulb, when specified.

Pivot mountings are especially suited to lift and high span bridges. The lamp hangs so as to be visible beneath the bridge, yet can be raised to the upper level of the bridge for changing lamp bulbs. Similarly, the No. 1333 lamp can be arranged for raising and lowering on two guide rods. Duplex lamps are necessary when it is desired to have auxiliary lighting, as two lamps cannot be used with a single fresnel. A relay can be furnished to light the auxiliary bulb when the main bulb fails.

Adlake No. 1380 Oil Burning Bridge Lamp



Adlake No. 1380 Bridge Lamps are made of the same aluminum castings as Adlake Electric Lamps. Either 180 or 360 degree red, green, or clear 8 inch fresnels can be furnished. Also, alternate red and green fresnels for Drawspan Lights.

These lamps are equipped with Adlake Balanced Draft Non-sweating Ventilation as described in Bulletin B-31. The ventilating parts are made of heavy sheet steel and are dipped in hot Terne metal to protect them from rusting. The burner uses a one inch flat wick. The oil fount has a capacity of 28 ounces, which is sufficient for approximately 84 hours.

Adlake No. 1345 lamp is similar to the No. 1380 lamp, but is made special with Brass castings and assembly bolts and Brass ventilation parts.

Signal Requirements for Bridges

Condensed from Government Regulations



DRAW-SPAN—Alternate red and green, each visible through 60 degrees only.



MID-CHANNEL—360 degree green on multiple span bridges, or 180 degree green on single span bridges without draws.



SHEER BOOM—360 degree red, for isolated piers, dams, and obstructions.



PIER—180 degree red—also, channel side light where channel is narrower than the span between piers.



LIFT BRIDGE—60 degree. Red and green panels are required with oil lamps, arranged to change color as the bridge is raised or lowered. Electric lamps should be duplex with 60 degree green and red lenses, electrically controlled to change colors.



WHITE—180 degree clear. On high bridges with several spans and without draws, two sets of three white lights are required over the mid-channel light to mark the main channel.