

Adlake Burners, Chimneys
Wicks, and Globes

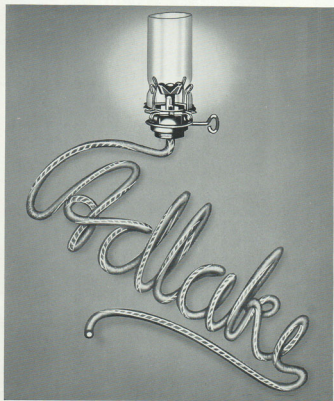
Bulletin B-61-A
Supersedes Bulletins B-17 and B-61

The Adams & Westlake Company

CHICAGO

General Office and Works
ELKHART, INDIANA

NEW YORK



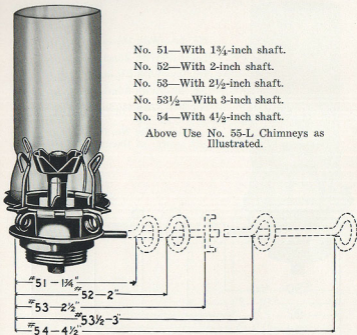
Adlake Long-Time Burners for Signal Lamps

The economy of Adlake Long-Time Burners has long been an established fact and Long-Time Burners are now used in practically all switch and semaphore lamps. In addition to the saving in oil, there is a reduction in maintenance costs of 50% to 85% as compared to one-day burners.

Adlake Round Flame Burners were first developed to produce a round, pencil shaped flame of high intensity within the focal area of the lens, resulting in maximum beam candle power and minimum oil consumption. Realizing that safety factors must be considered as well as savings in oil, most railroads now require burners with a wider flame to give greater beam spread, even though oil consumption increases slightly.

Adlake Flat Flame Burners provide additional safety in producing a beam spread approximately double the spread of a round flame burner. Considering economy in oil consumption in relation to the safety of wide beam spread and adaptability to various conditions, we recommend the No. 51 type Flat Flame Burner. The No. 69, 80, and 90 Types of Flat Flame Burner have a slightly wider flame and beam spread than the No. 51 type and consequently consume a little more oil. The No. 42 type flat flame burner has a smaller flame, with lower oil consumption and less beam spread.

Adlake No. 51 Type Flat Flame Long-Time Burner



No. 51—With 1 $\frac{3}{4}$ -inch shaft.

No. 52—With 2-inch shaft.

No. 53—With 2 $\frac{1}{2}$ -inch shaft.

No. 53 $\frac{1}{2}$ —With 3-inch shaft.

No. 54—With 4 $\frac{1}{2}$ -inch shaft.

Above Use No. 55-L Chimneys as Illustrated.

Oil consumption approximately 3.9 ounces in 24 hours.

For best results use Adlake Center Core Long-Time Burner Wick, see pages 10 and 11.

For position of wick raiser shaft, see page 9.

Catalogue
Numbers for
Using No. 55-D
Chimneys.

No. 55—With 1 $\frac{3}{4}$ -inch shaft.

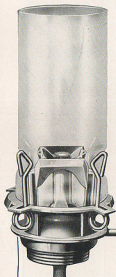
No. 56—With 2-inch shaft.

No. 57—With 2 $\frac{1}{2}$ -inch shaft.

No. 57 $\frac{1}{2}$ —With 3-inch shaft.

No. 58—With 4 $\frac{1}{2}$ -inch shaft.

Adlake No. 90 Type Flat Flame Long-Time Burner



No. 90—With 1¾-inch shaft.

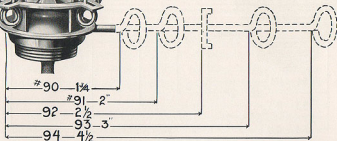
No. 91—With 2-inch shaft.

No. 92—With 2½-inch shaft.

No. 93—With 3-inch shaft.

No. 94—With 4½-inch shaft.

Above Use No. 55-L Chimney
as Illustrated



Oil consumption, approximately 4.62 ounces in 24 hours.

For best results use Adlake Center Core Long-Time Burner Wick,
see pages 10 and 11.

For position of wick raiser shaft, see page 9.

Catalogue
Numbers for
Using No. 55-D
Chimneys.

No. 100—With 1¾-inch shaft.

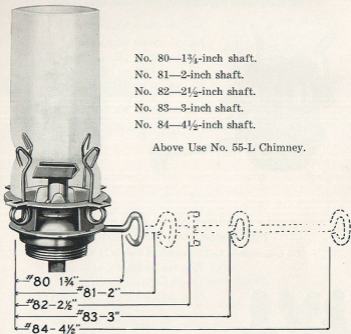
No. 101—With 2-inch shaft.

No. 102—With 2½-inch shaft.

No. 103—With 3-inch shaft.

No. 104—With 4½-inch shaft.

Adlake No. 80 Heinisch Type Flat Flame Long-Time Burner



No. 80—1¾-inch shaft.

No. 81—2-inch shaft.

No. 82—2½-inch shaft.

No. 83—3-inch shaft.

No. 84—4½-inch shaft.

Above Use No. 55-L Chimney.

Designed especially for Western oils.

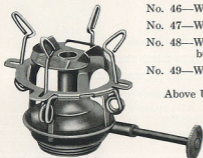
Oil consumption approximately 4.44 ounces in 24 hours.

For best results use Adlake Center Core Long-Time Burner Wick,
see pages 10 and 11.

For position of wick raiser shaft, see page 9.

**Adlake No. 46 Type
Flat Flame Long-Time Burner**

Oil Consumption Approximately 4.36 Ounces in 24 Hours.

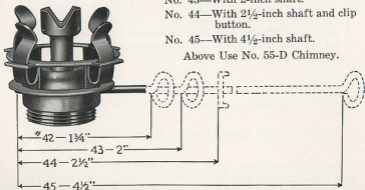


- No. 46—With 1¾-inch shaft.
- No. 47—With 2-inch shaft.
- No. 48—With 2½-inch shaft and clip button.
- No. 49—With 4½-inch shaft.

Above Use No. 55-L Chimney.

**Adlake No. 42 Type
Flat Flame Long-Time Burner**

Oil Consumption Approximately 3.5 Ounces in 24 Hours.



- No. 42—With 1¾-inch shaft.
- No. 43—With 2-inch shaft.
- No. 44—With 2½-inch shaft and clip button.
- No. 45—With 4½-inch shaft.

Above Use No. 55-D Chimney.

For best results use Adlake Center Core Long-Time Burner Wick, see pages 10 and 11.

For position of wick raiser shaft, see page 9.

Adlake No. 69 Type No-Chimney Flat Flame Long-Time Burner

Oil Consumption Approximately 4.44 Ounces in 24 Hours.

No. 69—With 1¾-inch shaft.

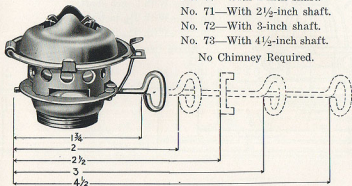
No. 70—With 2-inch shaft.

No. 71—With 2½-inch shaft.

No. 72—With 3-inch shaft.

No. 73—With 4½-inch shaft.

No Chimney Required.



Adlake No. 38 Type Round Flame Long-Time Burner

Oil Consumption Approximately 3.2 Ounces in 24 Hours.

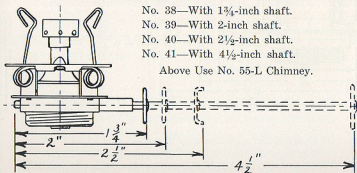
No. 38—With 1¾-inch shaft.

No. 39—With 2-inch shaft.

No. 40—With 2½-inch shaft.

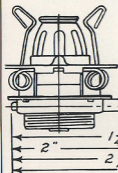
No. 41—With 4½-inch shaft.

Above Use No. 55-L Chimney.



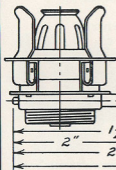
For best results use Adlake Center Core Long-Time Burner Wick, see pages 10 and 11.

**Adlake No. 30 Type
Round Flame Long-Time Burner**



- No. 30—With 1 $\frac{3}{4}$ -inch shaft.
- No. 31—With 2-inch shaft.
- No. 32—With 2 $\frac{1}{2}$ -inch shaft.
- No. 33—With 4 $\frac{1}{2}$ -inch shaft.

Above Use No. 55-L Chimney.



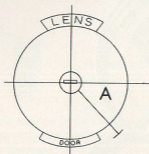
- No. 34—With 1 $\frac{3}{4}$ -inch shaft.
- No. 35—With 2-inch shaft.
- No. 36—With 2 $\frac{1}{2}$ -inch shaft.
- No. 37—With 4 $\frac{1}{2}$ -inch shaft.

Above use No. 55-D Chimney.

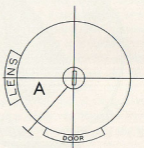
Oil consumption approximately 3 ounces in 24 hours.

For best results use Adlake Center Core Long-Time Burner Wick,
see pages 10 and 11.

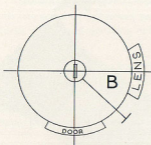
Relative Positions of Wick Shafts and Burner Tips for Adlake Flat Flame Long-Time Burners



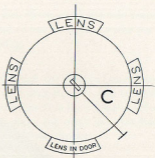
A.A.R. SEMAPHORE LAMP



NO. 9. SEMAPHORE LAMP



NO. 9. SEMAPHORE LAMP



SWITCH LAMP

When ordering Flat Flame Long-Time Burners, in order to have the flame in the proper position with relation to the lens, either specify for what lamps intended or indicate whether type A, B or C shall be furnished. *Type C is furnished unless otherwise specified.*

Adlake Center Core Long-Time Burner Wick



ADLAKE CENTER CORE LONG-TIME BURNER WICK
To insure long results, wicks must remain clean
and dry therefore do not remove from this package
until ready to use.
Force end of wick well into burner tube at bottom
of burner before turning ratchet. Do not attempt to
slide wick while turning ratchet, the star wheel
does the work.

THE ADAMS & WESTLAKE COMPANY
NEW YORK ELKHART CHICAGO

one dozen
Contents
No. 111

The Adlake Long-Time Burner Center-Core Wick has been designed for use in Long-Time Burners in signal lamps.



The Adlake Long-Time Burner Center-Core Wick consists of a strip of felt sewed in cylindrical form around a core of loosely twisted wool. The felt is of a special type. The center core greatly increases the capillary attraction of the wick and causes the oil to feed more freely. As the center core is of lighter material than the felt it burns faster and does not crust over, forming a small cup through which the oil feeds while burning. This prevents reduction of the size of the flame.

The sewing is of special type lock stitch which not only keeps the two edges of felt firmly together but makes the wicks perfectly round and prevents raveling.

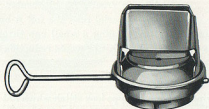
The sketch shows a section through the Adlake Long-Time Burner Center-Core Wick. The core consists of loosely twisted wool, the fibers of which run in the direction the oil moves. The dotted line shows the continuous shape and position of the flat flame produced by our No. 51 Long-Time Burner.

As the Long-Time Burner usually receives attention only every three or four days, it is necessary, under these conditions, that the wick shall have continued free capillary attraction so that the oil may be properly supplied to the burner flame. It is of equal importance that the top of the wick shall not char and form a solid crust through which the oil will not burn freely when delivered to the top of the wick. This wick has been developed to keep pace with the development of Adlake Long-Time Burners.

ADLAKE Lamp and Lantern Wicks

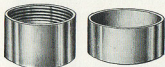
No. 0	E	Regular	$\frac{1}{2}$ "	x	$7\frac{3}{4}$ "
No. 1	A	Regular	$\frac{5}{8}$ "	x	$7\frac{3}{4}$ "
No. 1	A	Kero lantern	$\frac{5}{8}$ "	x	6"
No. 2	B	Regular	1"	x	$7\frac{3}{4}$ "
No. 2	B	Kero lantern	1"	x	6"
No. 3	D	Regular	$1\frac{1}{2}$ "	x	$7\frac{3}{4}$ "
No. 3	D	Dual	$1\frac{1}{2}$ "	x	10"
No. 3		Moehring circular	$1\frac{3}{8}$ "	x	$6\frac{1}{2}$ "
Acme circular				2"	x 6"
Adlake Center Core Long-Time Burner Wick $7\frac{1}{2}$ ".						

ADLAKE KERO LANTERN BURNERS



- No. 300 Bayonet Burner—Base $\frac{1}{2}$ " dia. for No. 1 wick.
 No. 300 Screw Burner—Base $\frac{1}{2}$ " dia. for No. 1 wick.
 No. 400 Bayonet Burner—Base $1\frac{1}{8}$ " dia. for No. 2 wick.
 Length of shaft, 3 inches.

ADLAKE BURNER COLLARS



SLIP COLLARS

- No. 1 Male $\frac{1}{2}$ " O.D.
 No. 1 Female $\frac{1}{2}$ " I.D.



NO. 4 FILLER CAP & COLLAR
 Dia. of thread $\frac{1}{2}$ ".



BURNER COLLARS

- No. 1 $\frac{3}{8}$ " dia. thread.
 No. 2 $1\frac{1}{8}$ " dia. thread.
 No. 3 $1\frac{3}{8}$ " dia. thread.

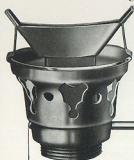


SOLID HOOPS

- No. 1 $\frac{3}{8}$ " dia. thread.
 No. 1 Extra $1\frac{1}{8}$ " dia. thread.
 No. 2 $1\frac{3}{8}$ " dia. thread.

No. 1 Signal Burner

Uses No. 1, $\frac{5}{8}$ -Inch Wick



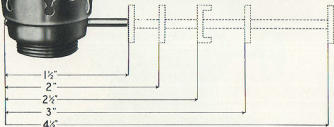
1½-inch shaft Spec. No. 1-A.

2-inch shaft Spec. No. 1-B.

2½-inch shaft Spec. No. 1-C.

3-inch shaft Spec. No. 1-D.

4½-inch shaft Spec. No. 1-E.

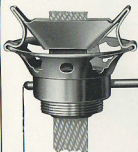


No. 0 Low Signal Burner

Uses No. 0, $\frac{1}{2}$ -Inch Wick

The No. 0 Low Signal Burner is made to use No. 0 instead of No. 1 Wick, thus effecting a saving of about 25% in oil consumption.

This burner is interchangeable with our standard Long-Time Burners.



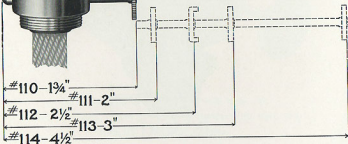
1¾-inch shaft, Spec. No. 110.

2-inch shaft, Spec. No. 111.

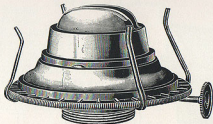
2½-inch shaft (oblong button for Nos. 169 and 175 Switch Lamps) Spec. 112.

3-inch shaft, Spec. No. 113.

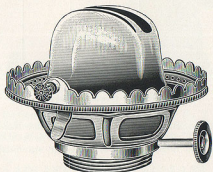
4½-inch shaft, Spec. No. 114.



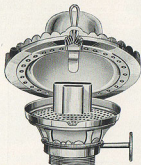
Burners For Lighting Fixtures



No. 2 Sun
Uses No. 2 Sun Bulb Chimney.

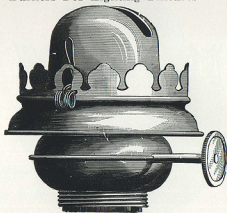


No. 2 Sun Hinge
Uses No. 2 Sun Hinge Chimney.



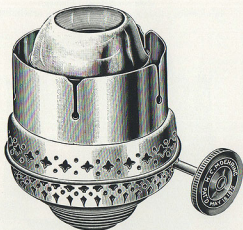
No. 2 Marcy Hinge
Uses No. 2 Dual Chimney.

Burners For Lighting Fixtures



No. 2 Dual

Uses No. 2 Dual Chimney.



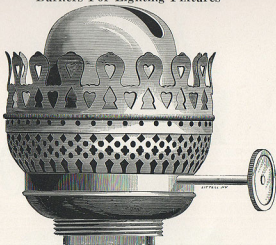
No. 3 Moehring

No. 3 Moehring Argand for flat wick. Spec. 143.

No. 3 Moehring Central Draught, for circular wick. Spec. 154.

Uses No. 3 Moehring Chimney.

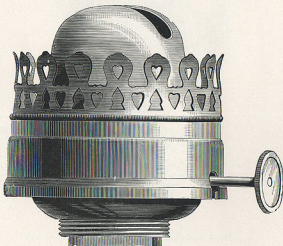
Burners For Lighting Fixtures



No. 3 Dual. Spec. 153.

Uses No. 3 Dual Chimney.

In ordering, please specify if wanted with or without skirt.

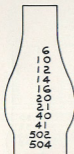


No. 3 Dual, with Skirt. Spec. 123.

Uses No. 3 Dual Chimney.

In ordering, please specify if wanted with or without skirt.

Lamp Chimneys



Rochester, Miller, Rayo,
Sun Bulb, 3 Dual, Electric



Long-Time Burner

LEAD GLASS CHIMNEYS

Cat. No.	Description	Diameter			Height	Std. Pkg.	Wt.
		Bottom	Bulge	Top			
6	No. 1 Rochester or Miller	2"	3"	1 $\frac{5}{8}$ "	8"	3 doz.	19 lbs.
10	No. 3 Rochester or Miller	4"	5 $\frac{3}{8}$ "	2 $\frac{3}{4}$ "	12"	1 doz.	14 lbs.
12	No. 2 Rochester B&H 10" —No. 2 Rayo	2 $\frac{5}{8}$ "	3 $\frac{3}{8}$ "	2"	10"	3 doz.	18 lbs.
14	Duplex	2 $\frac{1}{2}$ "	3 $\frac{3}{8}$ "	1 $\frac{3}{8}$ "	9 $\frac{1}{2}$ "	3 doz.	14 lbs.
*16	No. 3 Dual	2 $\frac{9}{16}$ "	3 $\frac{5}{8}$ "	1 $\frac{5}{8}$ "	10"	3 doz.	15 lbs.
20	No. 1 Sun Bulb	2 $\frac{1}{2}$ "	3 $\frac{3}{8}$ "	1 $\frac{11}{16}$ "	7 $\frac{1}{2}$ "	3 doz.	15 lbs.
*21	No. 2 Sun Bulb	3"	4"	2"	8 $\frac{1}{2}$ "	3 doz.	16 lbs.
502	No. 1 Sun Bulb (Crimp Top)	2 $\frac{1}{2}$ "	3 $\frac{3}{8}$ "	Crimp	7 $\frac{1}{2}$ "	3 doz.	15 lbs.
504	No. 2 Sun Bulb (Crimp Top)	3 $\frac{1}{2}$ "	4"	Crimp	8 $\frac{1}{2}$ "	3 doz.	19 lbs.
40	No. 2 Electric	3"	4"	2"	10"	3 doz.	19 lbs.
41	No. 1 Electric	2 $\frac{3}{8}$ "	3 $\frac{1}{2}$ "	1 $\frac{1}{2}$ "	9"	6 doz.	27 lbs.

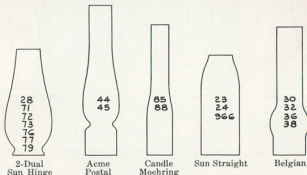
HEAT RESISTING CHIMNEYS

5	Longtime Burner	1 $\frac{1}{8}$ "	1 $\frac{3}{8}$ "	1 $\frac{1}{8}$ "	2 $\frac{1}{4}$ "	12 doz.	12 lbs.
55-A	Longtime Burner	1 $\frac{1}{8}$ "	1 $\frac{3}{8}$ "	1 $\frac{1}{8}$ "	2 $\frac{3}{8}$ "	12 doz.	12 lbs.
55-B	Longtime Burner	1 $\frac{1}{16}$ "	1 $\frac{3}{8}$ "	1 $\frac{1}{4}$ "	2 $\frac{3}{8}$ "	12 doz.	12 lbs.
55-D	Longtime Burner	1 $\frac{1}{16}$ "	1 $\frac{3}{8}$ "	1 $\frac{11}{16}$ "	2 $\frac{3}{8}$ "	12 doz.	12 lbs.
55-E	Longtime Burner	1 $\frac{1}{16}$ "	1 $\frac{3}{8}$ "	1 $\frac{11}{16}$ "	2 $\frac{3}{8}$ "	12 doz.	12 lbs.
55-H	Longtime Burner	1 $\frac{3}{8}$ "	1 $\frac{3}{8}$ "	1"	2 $\frac{3}{8}$ "	12 doz.	12 lbs.
55-L	Longtime Burner	1 $\frac{1}{4}$ "	1 $\frac{3}{8}$ "	1 $\frac{1}{4}$ "	2 $\frac{3}{8}$ "	12 doz.	12 lbs.
55-K	Longtime Burner	1 $\frac{1}{16}$ "	1 $\frac{3}{8}$ "	1 $\frac{1}{4}$ "	2 $\frac{9}{16}$ "	12 doz.	12 lbs.

*Can also be furnished in heat resisting glass.

Data furnished by Corning Glass Works.

Lamp Chimneys



LEAD GLASS CHIMNEYS

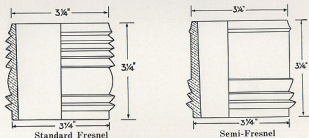
Cat. No.	Description	Diameter			Height	Std. Pkg.	Wt.
		Bottom	Bulge	Top			
966	No. 0 Sun Straight.....	1 ¹⁵ / ₁₆ "	2"	1 ¹ / ₄ "	6 ¹ / ₂ "	6 doz.	22 lbs.
23	No. 1 Sun Straight.....	2 ¹ / ₂ "	2 ¹ / ₂ "	1 ¹ / ₂ "	7"	6 doz.	23 lbs.
24	No. 2 Sun Straight.....	3"	3"	1 ³ / ₄ "	8"	6 doz.	45 lbs.
*28	No. 2 Sun Hinge.....	2 ³ / ₈ "	3 ³ / ₄ "	1 ¹ / ₂ "	8 ¹ / ₄ "	3 doz.	20 lbs.
30	No. 2 Belgian 9".....	1 ³ / ₈ "	2 ¹ / ₄ "	1 ³ / ₈ "	9"	6 doz.	40 lbs.
*32	Belgian 10".....	2 ¹ / ₂ "	3"	2"	10 ¹ / ₄ "	3 doz.	18 lbs.
36	Belgian 12".....	3"	3 ³ / ₈ "	2 ³ / ₄ "	12"	1 doz.	14 lbs.
38	Special.....	2 ³ / ₈ "	3 ³ / ₈ "	2 ¹ / ₄ "	10 ¹ / ₂ "	6 doz.	40 lbs.
*44	No. 11 Postal.....	2 ¹ / ₂ "	2 ⁵ / ₈ "	1 ¹¹ / ₁₆ "	12"	3 doz.	19 lbs.
*45	No. 11 Acme Postal.....	2 ¹ / ₂ "	2 ⁵ / ₈ "	1 ¹¹ / ₁₆ "	12"	3 doz.	19 lbs.
71	No. 2 Dual 6" fat.....	2 ¹ / ₂ "	3 ¹ / ₂ "	1 ¹ / ₂ "	6"	6 doz.	29 lbs.
72	No. 2 Dual 6" slim.....	2 ³ / ₈ "	3"	1 ³ / ₄ "	6"	6 doz.	26 lbs.
73	No. 2 Dual 5 ¹ / ₂ ".....	2 ¹ / ₈ "	3 ³ / ₈ "	1 ³ / ₈ "	5 ¹ / ₂ "	6 doz.	26 lbs.
*76	No. 2 Dual 8" fat.....	2 ¹ / ₂ "	3 ³ / ₄ "	1 ³ / ₄ "	8"	6 doz.	42 lbs.
77	No. 2 Dual 8" slim.....	2 ¹ / ₈ "	2 ⁷ / ₈ "	1 ⁵ / ₈ "	8"	6 doz.	32 lbs.
79	No. 2 Dual 9" slim.....	2 ¹ / ₈ "	3 ³ / ₈ "	1 ³ / ₄ "	9"	6 doz.	42 lbs.
85	Candle Lamp.....	2"	2"	1 ¹ / ₆ "	5 ¹ / ₂ "	6 doz.	21 lbs.
*88	No. 3 Moehring.....	2"	2"	1 ¹ / ₂ "	10 ¹ / ₂ "	6 doz.	30 lbs.
†92-A	Headlight.....	2 ¹¹ / ₁₆ "	3"	2"	10 ¹ / ₁₆ "	6 doz.	40 lbs.

*Can also be furnished in heat resisting glass.

†Heat resisting glass only.

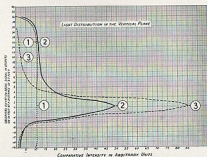
Data furnished by the Corning Glass Works.

Fresnel Lantern Globes



FOR ADLAKE KERO LANTERNS
Interchangeable with AAR Globes Nos. 16116, 16117,
16118, 16119 and 161110

Comparison of Lantern Globes

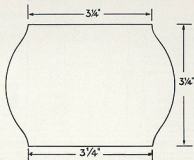


- ① Plain Globe.
- ② Semi-Fresnel Globe.
- ③ Standard Fresnel Globe.

STANDARD FRESNEL GLOBES produce a beam of high intensity but with limited vertical spread. They are especially adapted for use in crossing gate lanterns and also for Rip Track lanterns.

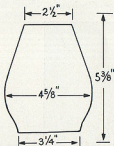
SEMI-FRESNEL GLOBES are a combination of a plain and a Fresnel globe. The increase in the intensity of the beam is not as great as for the standard Fresnel but the upward range is equal to a plain globe. The Semi-Fresnel globe is recommended for Rip Track lanterns.

Hand Lantern Globes

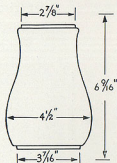


NO. 200 KERO GLOBE

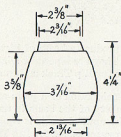
For Adlake Lanterns Nos. 200, 250, 300 and 400
AAR Plan 1611 (6-10).



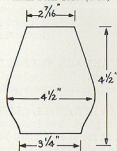
**No. 39 Signal Oil
Lantern Globe**
ARA Plan 1610 (1-5)



No. 0 Tubular Globe
ARA Plan 1610 (6-10)



"Vesta" Globe
ARA Plan 1611 (11-15)



No. 364 Globe
ARA Plan 1611 (16-20)